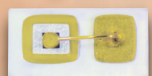


Kingbright

HELLUM

WORLD'S SMALLEST 0201 SMD LED

Microscopic
Footprint



0.35 mm

0.65 mm

HELLum actual size
0.65 x 0.35 x 0.2 mm



HELIUM

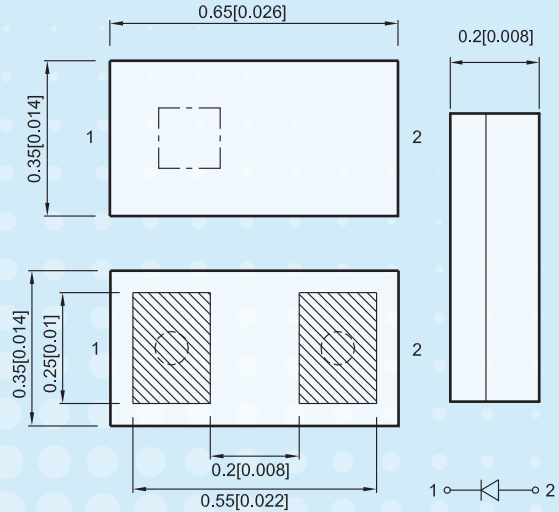
WORLD'S SMALLEST 0201 SMD LED

Product Features

- Industry's smallest SMD LED – 0201 footprint
- 0.65 x 0.35 x 0.20mm (LxWxH), various colors available
- Compatible with automatic placement equipments
- Moisture sensitivity level: Level 2, RoHS compliant

Applications

- Superb for mobile and wearable applications
- Ideal for disposable medical devices
- Ideal for portable devices with limited space



PRODUCT SPECIFICATION

Product Photos	Part Number	I _F (mA)	λD (nm)	I _v (mcd)		Viewing Angle
				Min.	Typ.	
	APG0603VWF-A1-5MAV	5	□ X=0.31 Y=0.31	180	320	140°
	APG0603VBC-A1-5MAV	5	■ 468	30	60	140°
	APG0603ZGC-5MAV	5	■ 525	180	280	140°
	APG0603CGC-TT	10	■ 571	6	15	140°
	APG0603SYC-TT	10	■ 589	10	30	140°
	APG0603SEC-TT	10	■ 605	20	50	140°
	APG0603SEC-E-TT	10	■ 624	15	40	140°
	APG0603SURC-TT	10	■ 631	10	35	140°

OTHER COMPACT OPTIONS

APG1005 Series	APHB1608 Series	APFA2507 Series
<ul style="list-style-type: none"> • Industry's thinnest 0402 footprint • 1.0x0.5x0.2mm (LxWxH) • Available in full color spectrum • Lower Vf required • High-intensity output 	<ul style="list-style-type: none"> • Standard 0603 footprints with 2 colors, 4 pinouts • Available in various color combinations • Suitable for status indication & backlight 	<ul style="list-style-type: none"> • Smallest right angle side-firing tricolor RGB LED • 2.5x0.7x1.0mm (LxHxW) • Wide viewing angle • Lower Vf required • Generates wide range of mixed colors

Kingbright

E-MAIL: SALES@KINGBRIGHTUSA.COM WEBSITE: WWW.KINGBRIGHTUSA.COM
 TEL: (909)468-0500 ADDRESS: 225 BREA CANYON ROAD, CITY OF INDUSTRY, CA 91789

